

nanoANQ XT RTLS Anchor

High throughput location and monitoring solutions

Flexible Monitoring and Location Solutions

The *nanoANQ XT RTLS Anchor* has been developed for use with nanotron's high throughput location and monitoring solutions in harsh environments. Together with *nanoLOC*-based tags and Nanotron's Location Server, it forms the basis for location-aware monitoring and management solutions.



nanoANQ XT

At 195 mm x 195 mm x 84 mm the compact design simplifies system deployment and eliminates the need for external antennas.

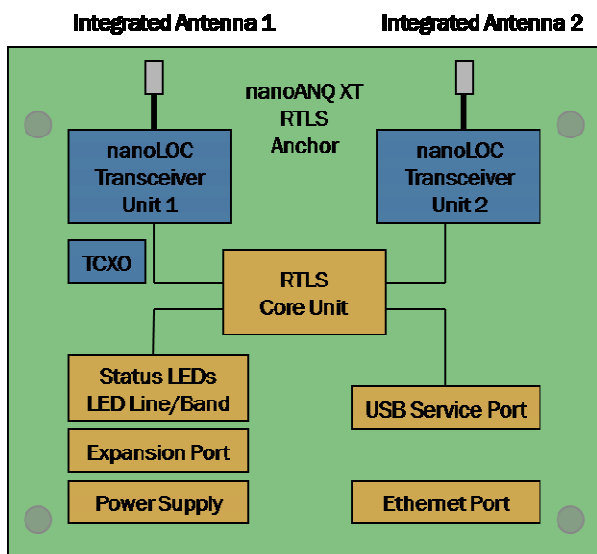
It features integrated antennas and an Ethernet port with PoE to connect to the transport network. Through its air interface, the *nanoANQ XT RTLS Anchor* supports bidirectional payload exchange between the Location Server and individual tags.

Services and functionality can be updated by simply upgrading the firmware of the anchor.

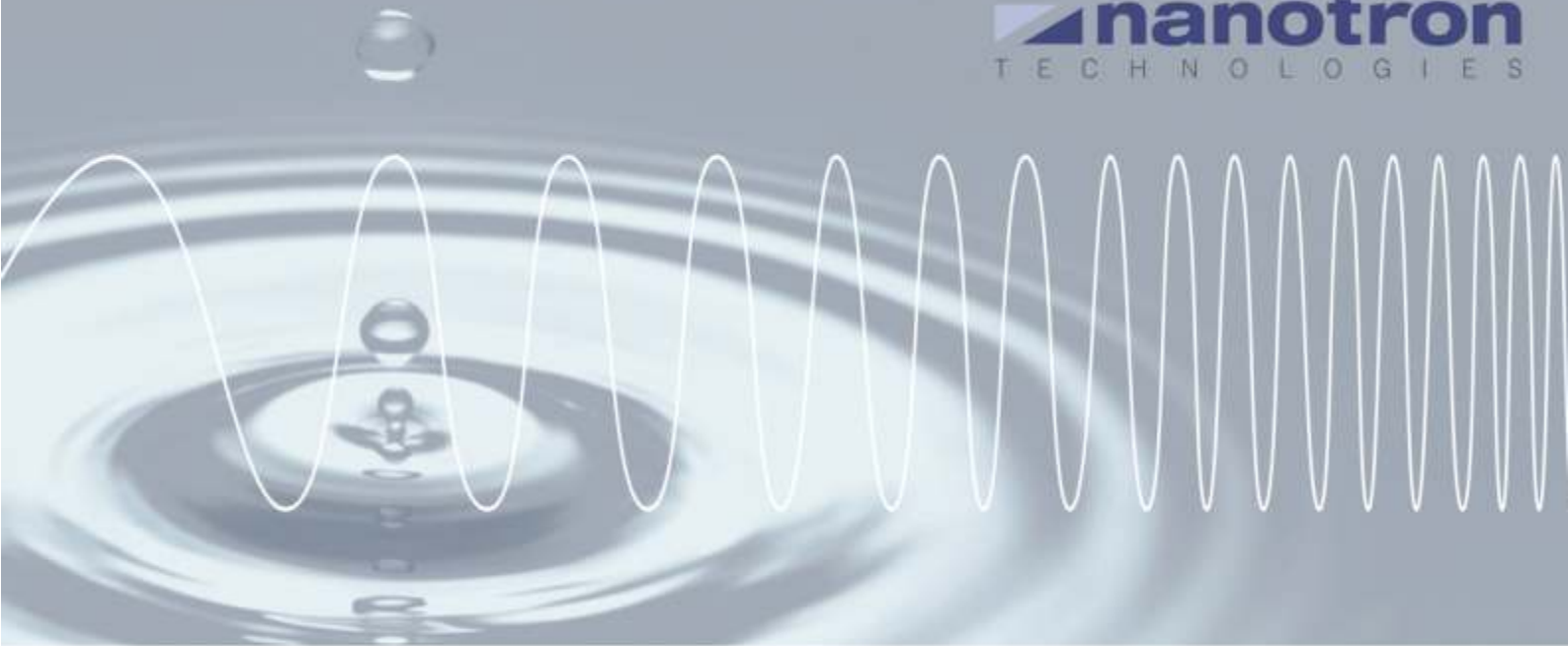
The device provides power amplifiers that are adjustable from 0 to +19 dBm for robust range and wide area coverage.

Key Features

- Location acquisitions > 250 Hz
- Typical range 50 m
- Typical location accuracy 1-3 m
- Minimum RTLS infrastructure > 6 nanoANQ XT
- RF technology Chirp Spread Spectrum (CSS)
- Power supply DC-IN, PoE
- DC-IN voltage 8 to 36V DC
- RF output power Configurable 0 to +19 dBm
- Operating temperature range -30 to 65 °C
- Transport Network Ethernet 100 base TX
- Receive sensitivity (22MHz, 250kbps) -95 dBm
- Dimensions 195 mm x 195 mm x 84 mm
- Weight 495 g
- IP Addressing Automatic, DHCP
- White LED Band Controlled through nanoLES API
- 3 color status LED Controlled through API



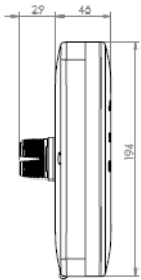
nanoANQ XT RTLS Anchor Block Diagram



Easy to install, the anchor is configurable in software remotely via a TCP/IP connection.

nanoANQ XT Housing

The *nanoANQ XT RTLS Anchor* is delivered in a robust housing providing IP65 protection against dust, moisture and water. Power supply and CAT6 Ethernet cables are connected through rubber-sealed openings at the back of the housing. Due to the integrated antennas no external antennas are required.



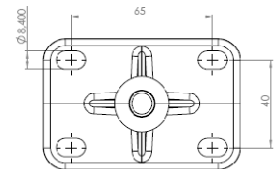
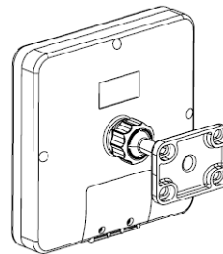
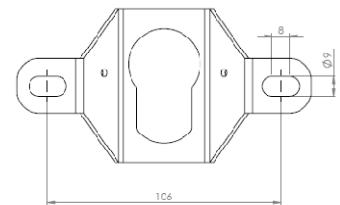
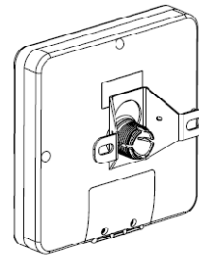
nanoANQ XT housing - physical dimensions

Power Supply

Two power supply options are available: DC IN and Power-Over-Ethernet (PoE). The DC IN supply can be provided by a wide range of voltages from 8 to 36 V.

Mounting Options

nanoANQ XT could be easily mounted to walls or other flat surfaces with the help of the optional mounting accessories.



nanoANQ XT mounting accessories

Ordering Information

The Anchor is available with optional mounting accessories.

| Number | Description |
|----------|---------------------------------|
| BNAR02PX | nanoANQ XT RTLS Anchor, PoE |
| BNAR02MK | nanoANQ XT Mounting Accessories |
| KNRTB01 | nanoPAL - RTLS Tool Box |

Visit www.nanotron.com for more information on Nanotron's complete line of products and tools or write to us at Nanotron Technologies GmbH, Alt-Moabit 60, 10555 Berlin, Germany.