

802.11 Dual Band 2.45/5 GHz Mini Chip Antenna. WiFi, Wireless LAN, I P/N 2450AD14A5500

Detail Specification: 4/28/2016

Page 1 of 6

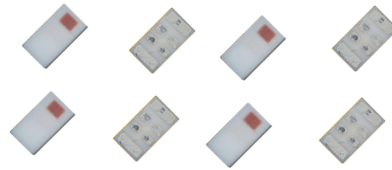
This is the Web version of this datasheet, for the full datasheet, please contact us at: www.johansontechnology.com/ask-a-question

General Specifications

Part Number	2450AD14A5500	
Frequency (MHz)	2400 - 2480	5150 - 5850
Ave. Rad Efficiency	60%	80%
Peak Gain (dBi typ.)	1.0 dBi typ. (XZ-Total)	4.0 dBi typ. (XZ-Total)
Average Gain (dBi typ.)	-3.5 dBi typ. (XZ-Total)	-2.5 dBi typ. (XZ-Total)
Return Loss (dB)	6 min.	6 min.
Impedance	50 Ω	
Input Power	2 Watts max. (CW)	

Let us help you with the antenna design, optimization, and tuning!

www.johansontechnology.com/ipc-antenna-services



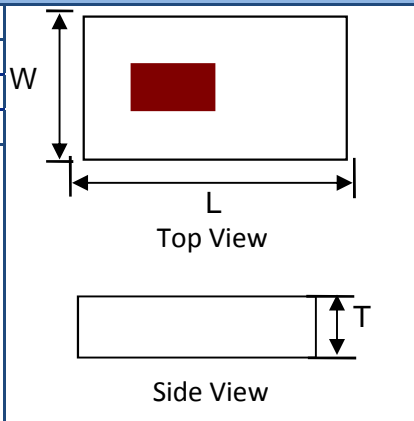
Storage Period	18 months max.
Storage Temperature	-40 to +85°C
Operating Temperature	-40 to +85°C
Reel Quantity	4000

Part Number Explanation

P/N Suffix	Packing Style	Bulk (loose)	Suffix = S	e.g. 2450AD14A5500S
		T & R	Suffix = E	e.g. 2450AD14A5500E
		100% Tin	Suffix = E or S	e.g. 2450AD14A5500(E or S)
	Evaluation Board	2450AD14A5500-EB1SMA & 2450AD14A5500-EB2SMA		

Mechanical Dimensions

	In	mm
L	0.063 ± 0.004	1.60 ± 0.10
W	0.031 ± 0.004	0.80 ± 0.10
T	0.016 max.	0.40 max.



Terminal Configuration

No.	Function
1	GND
2	FEED
3	NC
3	NC

If you'd like the complete datasheet which includes detailed gain performance, layout guidelines, application notes, small WiFi application layout, send us as message at:

www.johansontechnology.com/ask-a-question

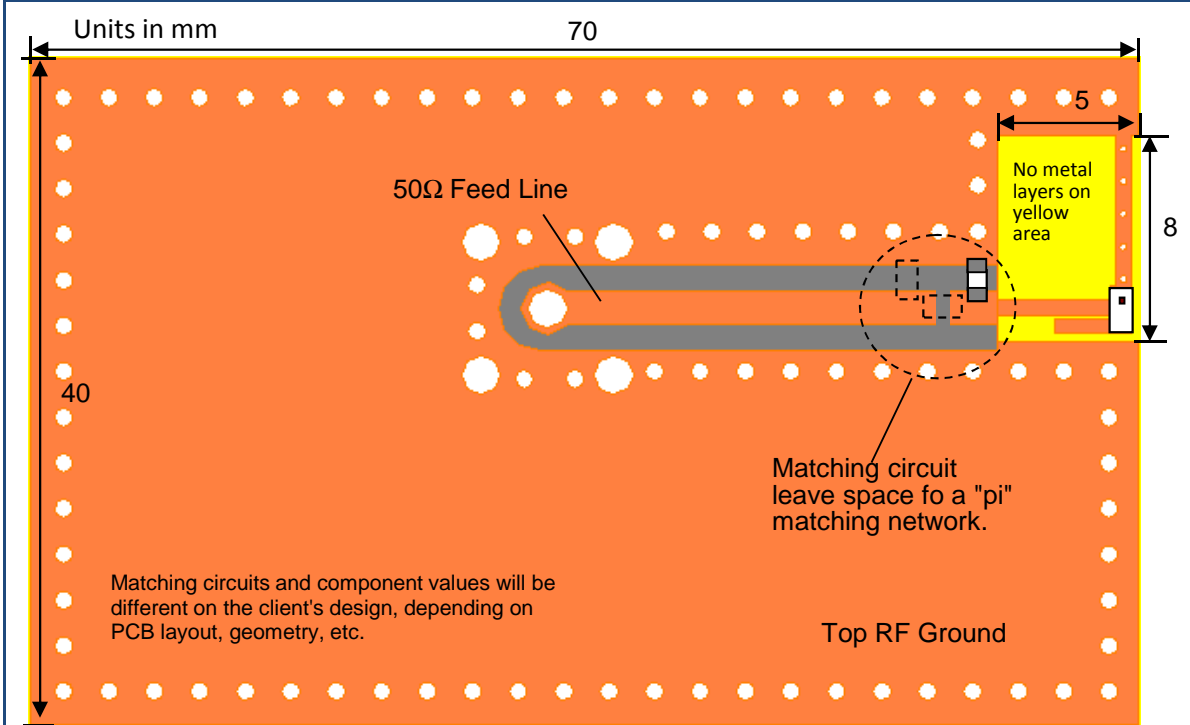
As a bonus, you'll be assigned an RF Engineer to assist you in the design for free!

Johanson Technology, Inc. reserves the right to make design changes without notice.
All sales are subject to Johanson Technology, Inc. terms and conditions.

802.11 Dual Band 2.45/5 GHz Mini Chip Antenna. WiFi, Wireless LAN, IoT P/N 2450AD14A5500

Detail Specification: 4/28/2016

Page 2 of 7

*This is the Web version of this datasheet, for the full datasheet, please contact us at: www.johansontechnology.com/ask-a-question***Mounting Considerations 1: Evaluation Board (smaller)****To order a pre-tuned 50Ω EVB with a female SMA connector click here:****www.johansontechnology.com/request-a-sample**

Would you like the layout file of the above? Have antenna tuning issues?

Please contact us if you have any questions regarding the implementation of this antenna in your PCB's layout. We'll be happy to guide you to maximize the antenna's performance.

Contact our applications engineers at:

www.johansontechnology.com/ask-a-question

If you'd like the complete datasheet which includes detailed gain performance, layout guidelines, application notes, small WiFi application layout, send us as message at:

www.johansontechnology.com/ask-a-question

As a bonus, you'll be assigned an RF Engineer to assist you in the design for free!

Johanson Technology, Inc. reserves the right to make design changes without notice.
All sales are subject to Johanson Technology, Inc. terms and conditions.

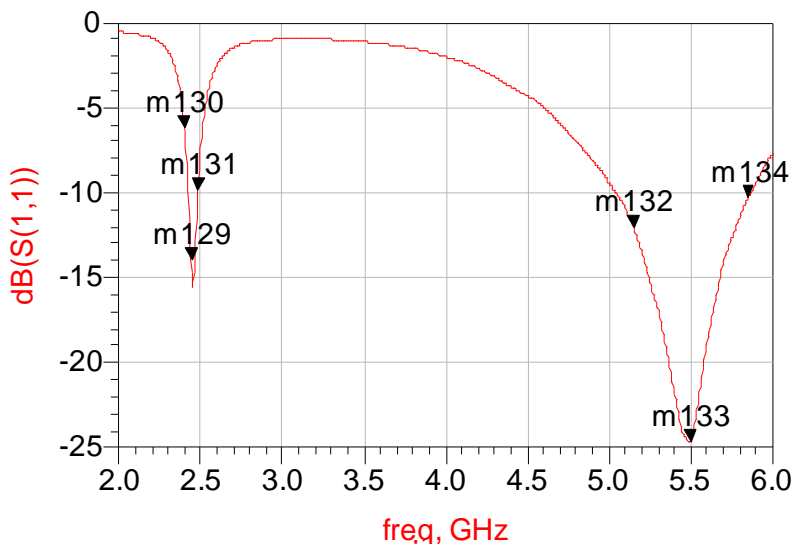
802.11 Dual Band 2.45/5 GHz Mini Chip Antenna. WiFi, Wireless LAN, IoT P/N 2450AD14A5500

Detail Specification: 4/28/2016

Page 3 of 6

This is the Web version of this datasheet, for the full datasheet, please contact us at: www.johansontechnology.com/ask-a-question

Mounting Considerations 2: Typical Electrical Performance (T=25°C)



m130 freq=2.400GHz dB(S(1,1))=-6.202	m129 freq=2.442GHz dB(S(1,1))=-14.010	m131 freq=2.484GHz dB(S(1,1))=-9.880
m132 freq=5.150GHz dB(S(1,1))=-12.066	m133 freq=5.500GHz dB(S(1,1))=-24.657	m134 freq=5.850GHz dB(S(1,1))=-10.323

If you'd like the complete datasheet which includes detailed gain performance, layout guidelines, application notes, small WiFi application layout, send us as message at:

www.johansontechnology.com/ask-a-question

As a bonus, you'll be assigned an RF Engineer to assist you in the design for free!

Johanson Technology, Inc. reserves the right to make design changes without notice.
All sales are subject to Johanson Technology, Inc. terms and conditions.

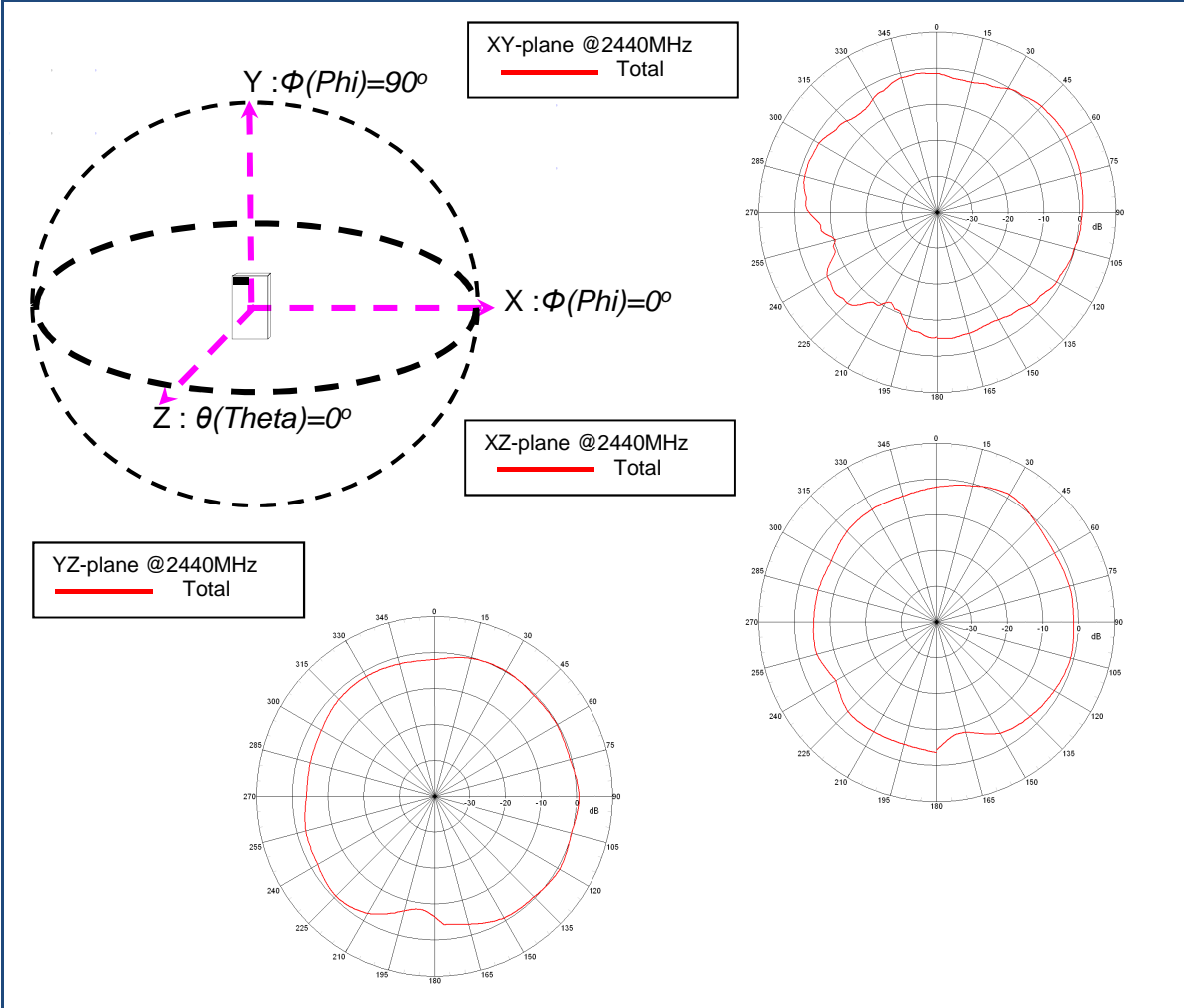
802.11 Dual Band 2.45/5 GHz Mini Chip Antenna. WiFi, Wireless LAN, IoT P/N 2450AD14A5500

Detail Specification: 4/28/2016

Page 4 of 6

This is the Web version of this datasheet, for the full datasheet, please contact us at: www.johansontechnology.com/ask-a-question

Typical EM Radiation Performance @ 2.44GHz (T=25°C)



If you'd like the complete datasheet which includes detailed gain performance, layout guidelines, application notes, small WiFi application layout, send us as message at:

www.johansontechnology.com/ask-a-question

As a bonus, you'll be assigned an RF Engineer to assist you in the design for free!

Johanson Technology, Inc. reserves the right to make design changes without notice.
All sales are subject to Johanson Technology, Inc. terms and conditions.

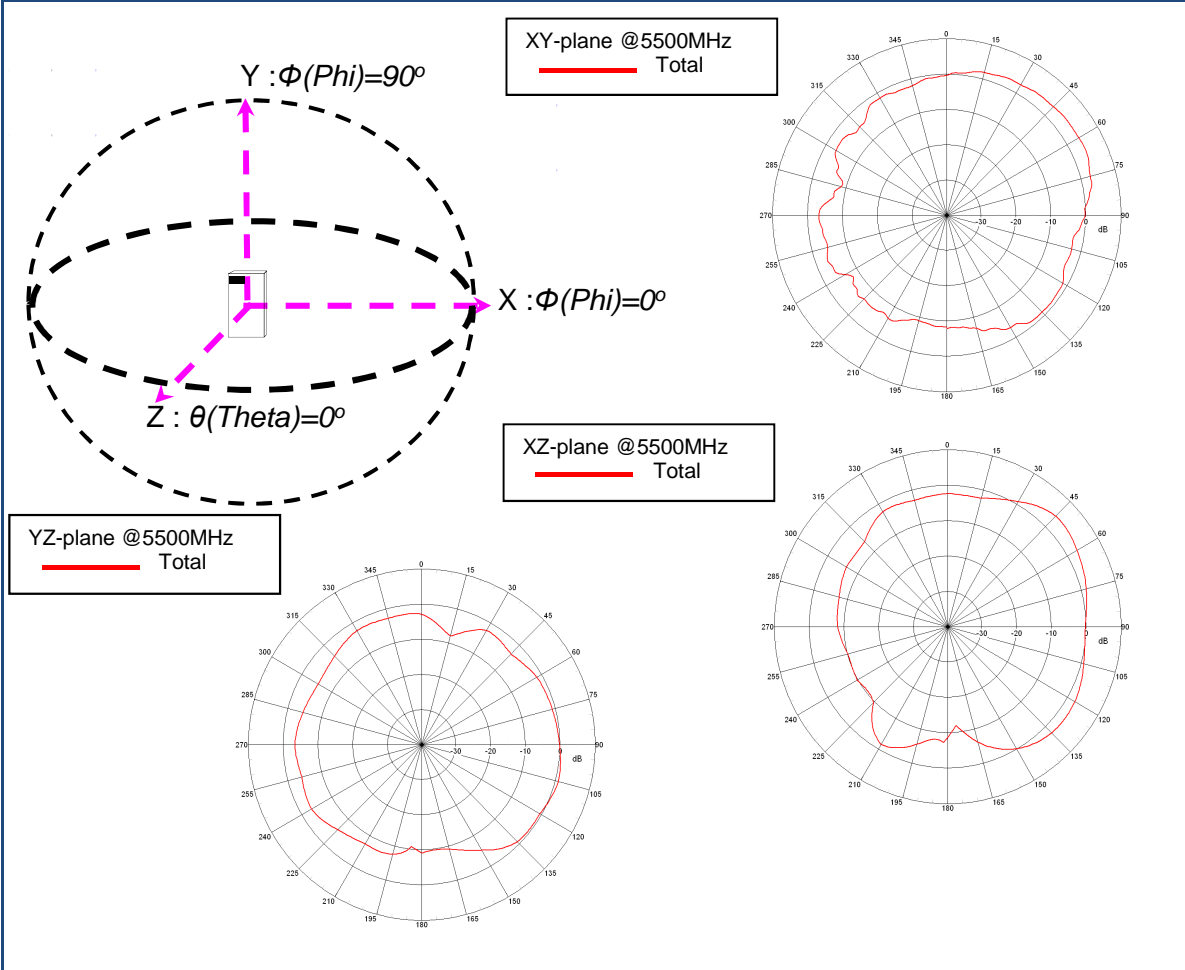
802.11 Dual Band 2.45/5 GHz Mini Chip Antenna. WiFi, Wireless LAN, IoT P/N 2450AD14A5500

Detail Specification: 4/28/2016

Page 5 of 6

This is the Web version of this datasheet, for the full datasheet, please contact us at: www.johansontechnology.com/ask-a-question

Typical EM Radiation Performance @ 5.50 GHz (T=25°C)



If you'd like the complete datasheet which includes detailed gain performance, layout guidelines, application notes, small WiFi application layout, send us as message at:

www.johansontechnology.com/ask-a-question

As a bonus, you'll be assigned an RF Engineer to assist you in the design for free!

Johanson Technology, Inc. reserves the right to make design changes without notice.
All sales are subject to Johanson Technology, Inc. terms and conditions.

Web
Version

"High Frequency Ceramic Solutions"

802.11 Dual Band 2.45/5 GHz Mini Chip Antenna. WiFi, Wireless LAN, IoT

P/N 2450AD14A5500

Detail Specification: 4/28/2016

Page 6 of 6

This is the Web version of this datasheet, for the full datasheet, please contact us at: www.johansontechnology.com/ask-a-question

Antenna tuning, optimization, and validation services:

www.johansontechnology.com/ipc-antenna-services

For more antennas and to download measured S-parameters, go to:

www.johansontechnology.com/antennas

For more information about our diplexers:

www.johansontechnology.com/diplexers

Soldering Information

www.johansontechnology.com/ipcsoldering-profile

MSL Info

<http://www.johansontechnology.com/msl-rating>

Packaging information

www.johansontechnology.com/tape-reel-packaging

For layout review contact our Applications Team at:

www.johansontechnology.com/ask-a-question

RoHS Compliance

www.johansontechnology.com/rohs-compliance

Need help designing the antenna in? Use our antenna design services!
www.johansontechnology.com/ipc-antenna-services
2 Free layout reviews and if you need us to tune and characterize the antenna on your product (inside anechoic chamber) we can do that too. Small lab fee may apply for the latter.

If you'd like the complete datasheet which includes detailed gain performance, layout guidelines, application notes, small WiFi application layout, send us as message at:

www.johansontechnology.com/ask-a-question

As a bonus, you'll be assigned an RF Engineer to assist you in the design for free!

Johanson Technology, Inc. reserves the right to make design changes without notice.
All sales are subject to Johanson Technology, Inc. terms and conditions.



www.johansontechnology.com
4001 Calle Tecate • Camarillo, CA 93012 • TEL 805.389.1166 FAX 805.389.1821
Ver. 1.0 2016 Johanson Technology, Inc. All Rights Reserved