

698-2700MHz 2G/3G/4G/LTE FPC Flexible Antenna

Part No:AC-Q7027N27

1. Introduction

FPC Flexible antennas excel in wideband cellular 2G/3G/4G for Cellular IoT (LTE-M/Cat-M1, NB-IoT) applications, with product specialization in Low-power wide-area (LPWA) applications such as LoRaWAN® and Sigfox®, GNSS/Navigation, and WiFi/WLAN and Bluetooth®.

FPC antennas provide a ground plane independent dipole embedded antenna solution comparable in performance to an external antenna. The FPC series' flexibility and adhesive backing makes it easy to mount in unique and custom enclosures, while enabling an environmentally sealed enclosure and protection from tampering or accidental antenna damage.

Connection is made to the radio via a 100 mm long, 1.13 mm coaxial cable terminated in an MHF1/U.FL compatible plug connector.

Compact, low-profile 0.2 mm height MHF/U.FL compatible plug (female socket) on 100 mm of 1.13 mm coaxial cable. Flexible to fit in challenging enclosures

Adhesive backing permanently adheres to nonmetal enclosures using 3M adhesive



2. Specification

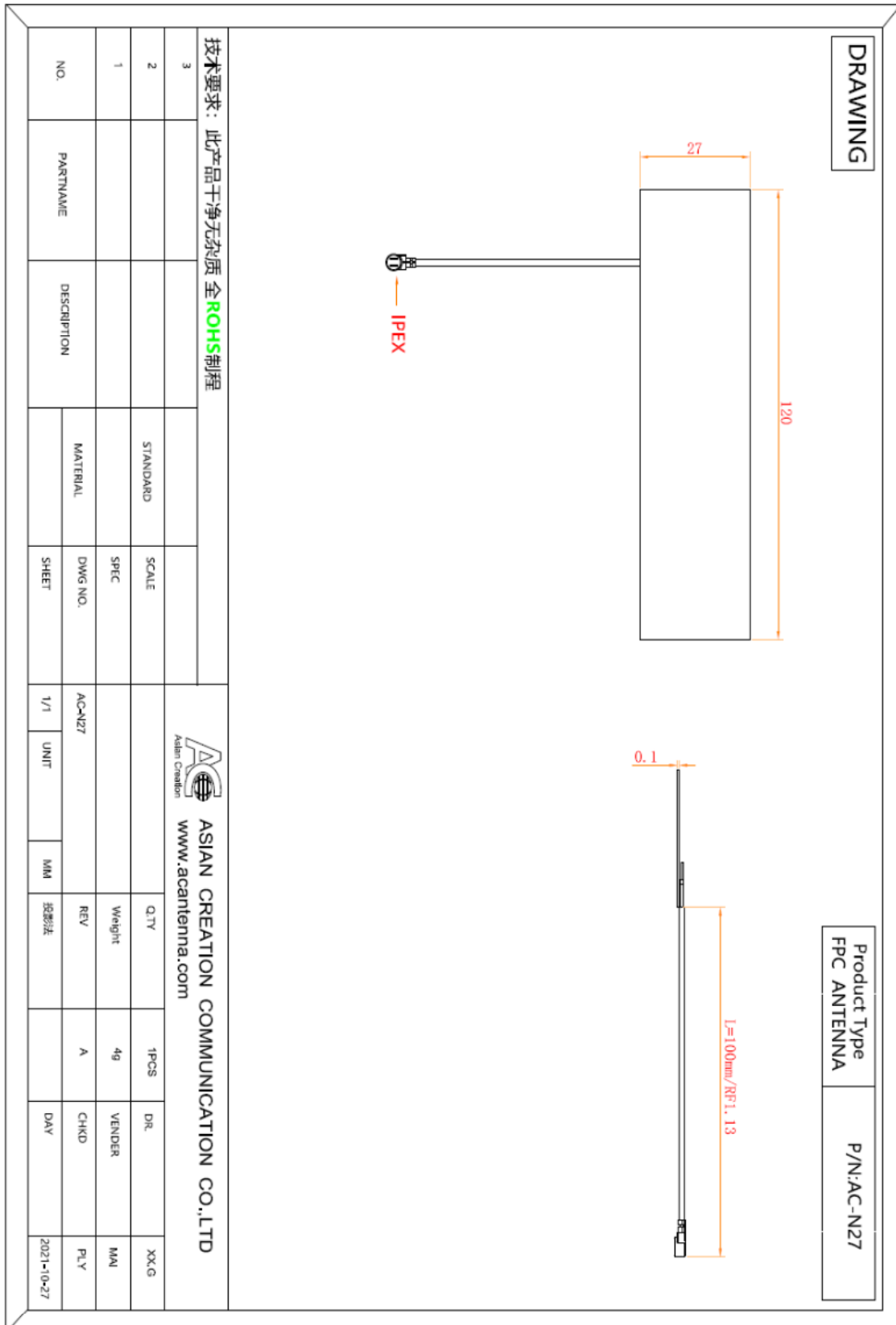
Electrical

Frequency Range	698-960/1710-2700MHz
Gain	3dBi
V.S.W.R	≤2.0
Radiation	Omni-Direction
Polarization	Vertical
Maximum Input Power	50W
Impedance	50Ω
Cable Type	1.13cable
Cable Length	10cm
Connector	IPEX
Antenna Radome Material	FPC

Mechanical

Dimensions	120x27x0.1mm
Weight	≤10g
Operating Temperature	-40°C to+70°C
RoHS Compliant	YES

3.Drawing



4.V.S.W.R

