

# Neoway N3830 Gateway

Creating a leading diversified communications company

**Neoway Technology Co., Ltd.**

November 12, 2018



# Product Introduction

N3830 is an intelligent 4G gateway developed on Qualcomm 9x07 platform. It runs an Linux OS with deeply-optimized kernel and allows further development, well applicable to industrial IoT.

## Product Features

- Compatible with multiple network modes, covering 2G/3G/4G and cat4 rate
- Dual serial ports that support transparent transmission, with interfaces RS232/RS485 optional
- 1 x gigabit Ethernet
- VPDN private network, VPN (PPTP, L2TP) tunnel
- (Optional) Wi-Fi (802.11b/g/n) AP/STATION modes
- (Optional) GPS positioning
- (Optional) Open Linux / Modbus protocol development
- (Optional) Neoway cloud platform for device fault statistics, online upgrade, traffic monitoring, remote configuration, etc.
- Operating temperature: : -30°C to +70°C

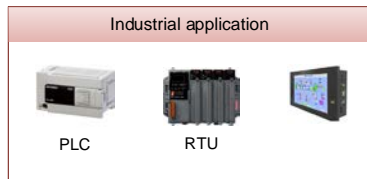
## Intelligent Gateway N3830



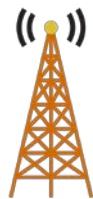
# Basic Parameters

Basic Parameters	Description
Temperature range	Working temperature: -30°C to +70°C Storage temperature: -40°C to +85°C
L*W*H (excluding interfaces)	104.6Mm*86.5mm*29.6mm, tolerance: ±0.15mm
Weight	195g±10g
Operating voltage range	DC: 9V to 26V (12V is recommended)
Operating current (12V)	Max instantaneous peak current 500mA Max average current 150mA Average idle current 40mA Sleep current 3mA
Serial port baud rate	2400/4800/9600/19200/57600/115200
LTE network rate	FDD: 150Mbps (downlink) /50Mbps (uplink) @CAT4 TDD: 130Mbps (downlink) /35Mbps (uplink) @CAT4
Ethernet	10M/100M/1000M Ethernet auto-detection
TF card (optional)	TF expansion, a maximum of 32GB Micro SD

# Application Scenarios



GNSS  
positioning



Business platform



Business server



Mgmt server

Users can achieve:

- Compatible with all local networks
- Dual serial ports, transparent transmission
- Gigabit Ethernet transmission
- GPS or LBS
- VPN tunnel connection
- Modbus protocol customization development
- Open linux system development
- Cloud platform management

# Promotion Strategies

## Target clients:

- Hydraulic engineering, meteorology, environmental protection
- Electricity, telecommunication, petroleum
- Industrial control, industrial automation (machine tools, PLC, air compressors, etc.)
- Self-service terminals (bank ATM, express lockers, self-service machines, and other X86/Android terminals)
- Video transmission (high-speed monitoring, in-vehicle monitoring, portable law enforcement, and driving exam system)
- Remote collection, remote control, remote release, etc.
- New-energy projects such as PV, wind power, and charging piles
- Lighting projects (street lamp control, landscape lamps, and LED screen control)
- Special equipment (elevators), medical equipment, and remote medical treatment
- Enterprises that operate and produce shared equipment

## Core Advantages:

- Flexible individualized customization, professional communication service provider;
- Supports customization of various differentiated solutions to improve the added value of products;
- Provides all-in-one solutions that include software, hardware, platform, and other development services;
- Provides integrated package services: communication box + SIM card + traffic expenses + antenna +ID2 (security);
- A professional R&D design team provide domestically-leading technical solutions;
- Original-factory service: provides nationwide on-site support and service personnel to satisfy requirements for real-time technical service;
- Meets ISO quality management system requirements, boasts excellent supply capabilities, and meets customers' demand for swift large-scale deployment.

We understand **cellular communication** better than router manufacturers and understand **industrial applications** better than cellular module manufacturers.

# Comparison with Competitors' Products

	N3830	Ordinary 4G routers
<b>Product positioning</b>	Customizable industrial IoT gateway product	4G router
<b>Core hardware</b>	Adopts high-performance 4G N720 Neoway developed; better understanding of ourselves and higher customizability for development.	Purchase other vendors' modules for development.
<b>Master chip</b>	The master chip is a Qualcomm-based 1.2GHz main frequency ARM Cortex-A7 processor, with RAM of 256MB and ROM of 256MB; high performance, lower costs, and greater stability in dialup operation.	Adopt MTK or other brands' independent CPU for development; high costs, requiring high module compatibility with many module vendors.
<b>Serial port customizability</b>	Supports dual serial ports, each of which supports multi-center connection; the modbus protocol can be customized based on customers' needs to control the lower machine mainboard, perfectly compatible with industrial application sites.	No serial port or just a single serial port for transparent transmission, not customizable
<b>IO customizability</b>	Allows IO ports definition based on customers' needs, control or collect required node data, realize certain customized functions, and help customers lower the costs of onsite hardware development	No IO ports
<b>Ethernet</b>	Supports the gigabit Ethernet and transmission of high-bandwidth data and supports protocol customization based on customers' needs	Most use the 100-megabyte Ethernet, not customizable.
<b>Openness</b>	N3830 open Linux solution allows customers to develop standard Linux applications based on their own needs and allows application porting for direct use	Closed system, not allowing further development
<b>Extended storage</b>	Supports TF card extension of up to 32GB, and supports customization of functions based on needs	Not support extension
<b>Cloud platform management</b>	Proprietary cloud platform to perform parameter management, status monitoring, remote upgrade, report output, and other functions on equipment; providing customizable support for Alibaba IOT platform, Onenet platform, etc.	Proprietary platform or no platform

# Industry Customers



**THANKS**

