

S72x

Driver Installation and Uninstallation Guide

Issue1.0



Copyright © Neoway Technology Co., Ltd 2022. All rights reserved.

No part of this document may be reproduced or transmitted in any form or by any means without prior written consent of Neoway Technology Co., Ltd.

neoway 有方 is the trademark of Neoway Technology Co., Ltd.

All other trademarks and trade names mentioned in this document are the property of their respective holders.

Notice

This document provides guide for users to use S720 and S726.

This document is intended for system engineers (SEs), development engineers, and test engineers.

THIS GUIDE PROVIDES INSTRUCTIONS FOR CUSTOMERS TO DESIGN THEIR APPLICATIONS. PLEASE FOLLOW THE RULES AND PARAMETERS IN THIS GUIDE TO DESIGN AND COMMISSION. NEOWAY WILL NOT TAKE ANY RESPONSIBILITY OF BODILY HURT OR ASSET LOSS CAUSED BY IMPROPER OPERATIONS.

THE INFORMATION IN THIS DOCUMENT IS SUBJECT TO CHANGE WITHOUT NOTICE DUE TO PRODUCT VERSION UPDATE OR OTHER REASONS.

EVERY EFFORT HAS BEEN MADE IN PREPARATION OF THIS DOCUMENT TO ENSURE ACCURACY OF THE CONTENTS, BUT ALL STATEMENTS, INFORMATION, AND RECOMMENDATIONS IN THIS DOCUMENT DO NOT CONSTITUTE A WARRANTY OF ANY KIND, EXPRESS OR IMPLIED.

Neoway provides customers complete technical support. If you have any question, please contact your account manager or email to the following email addresses:

Sales@neoway.com

Support@neoway.com

Website: <http://www.neoway.com>

Contents

1 Introduction to Driver Package	5
2 How to Uninstall drivers:	6
3 How to Install Drivers	7
3.1 Fully Install (Recommend)	7
3.2 Upgrade Install	7
4 FAQs	12

About This Document

Scope

This document is applicable to S720 and S726.




Audience

This document is intended for [system engineers \(SEs\)](#), [development engineers](#), and [test engineers](#).

Change History

Issue	Change	Changed By
1.0	Initial draft	Luo Jian

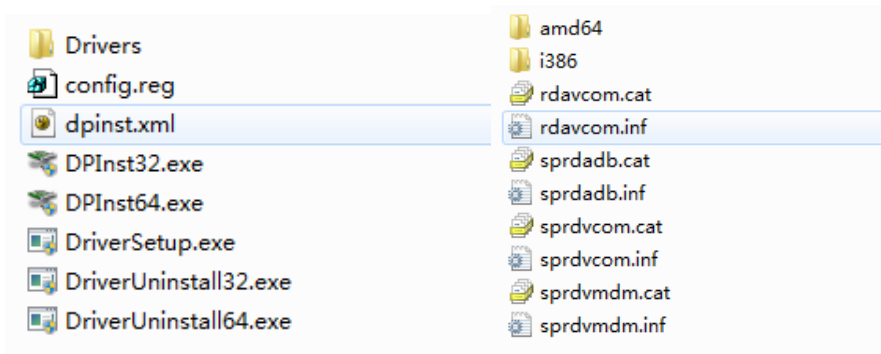
Conventions

Symbol	Indication
	Indicates danger or warning. This information must be followed. Otherwise, a catastrophic module or user device failure or bodily injury may occur.
	Indicates caution. This symbol alerts the user to important points about using the module. If these points are not followed, the module or user device may fail.
	Indicates instructions or tips. This symbol provides advices or suggestions that may be useful when using the module.

1 Introduction to Driver Package

S720 and S726 are developed based on the UNISOC platform, so they can use UNISOC drivers.

- DriversForWin10:



This folder includes all driver files for Win10 OS platform

- **DriverSetup.exe**: main installer
 - **config.reg**: configure for ignore HW serial number by modify system register
 - **dpinst.xml**: installer configure file
 - **DPIInst32/64.exe**: installer using dpinst.xml
 - **Drivers**: driver inf/cat/bin files
 - ***.inf**: driver install files
 - ***.cat**: digital signed files
 - **amd64**: bin files folder for Win64 platform
 - **i386**: bin files folder for Win32 platform
 - **DriverUninstall32/64.exe**: uninstall drivers for Win32 / Win64 platform
- DriversForWin78
Drivers for Win7 and Win8 OS platform.
It is same as the folder "DriversForWin10".

2 How to Uninstall Drivers

- For Win32 OS platform
Run **DriverUninstall32.exe** with administrator privilege.
- For Win64 OS platform
Run **DriverUninstall64.exe** with administrator privilege.

3 How to Install Drivers



Uninstall drivers before install new drivers.

3.1 Fully Install (Recommend)

Step 1: Remove the USB connection for all UNISOC products

Step 2: Enter the folder with drivers.

Step 3: For Win10, enter the folder “DriversForWin10”.

Step 4: For Win7 or Win8, enter the folder “DriversForWin78”.

Step 5: Run **DriverSetup.exe** with administrator privilege

Step 6: Follow install wizard until all steps complete

Step 7: Connect the S720 or S726 by USB cable and the system will install the driver automatically.

3.2 Upgrade Install

Step 1: Close all programs(such as Download or Logel tool)that will use ports or adb

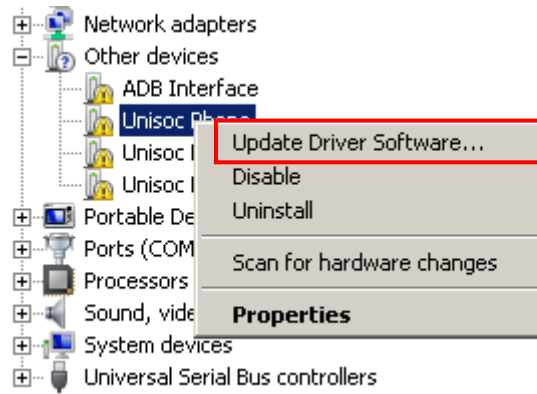
Step 2: Open Device Manager(Right click my computer and select “Manager” ,and then select the Device Manager node)

Step 3: Connect the S720 or S726 to the PC by USB cable

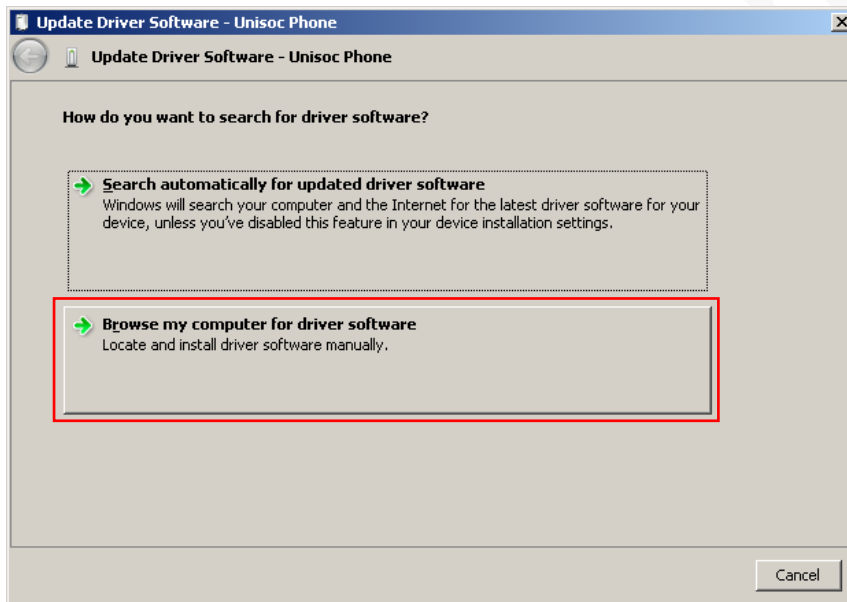
Step 4: New devices will show in the Device Manager

Step 5: Follow the steps in below operation.

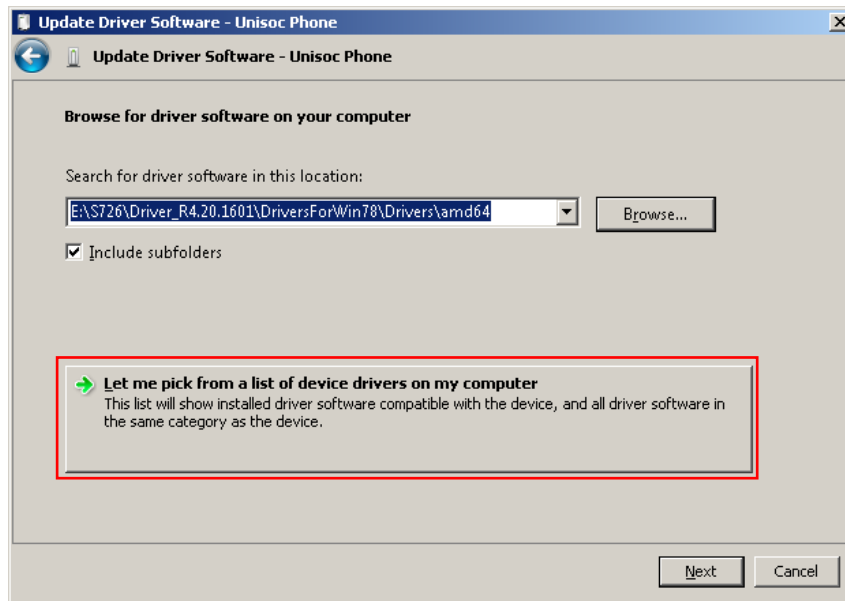
1. Select the device and right click to **Upgrade Driver Software....**



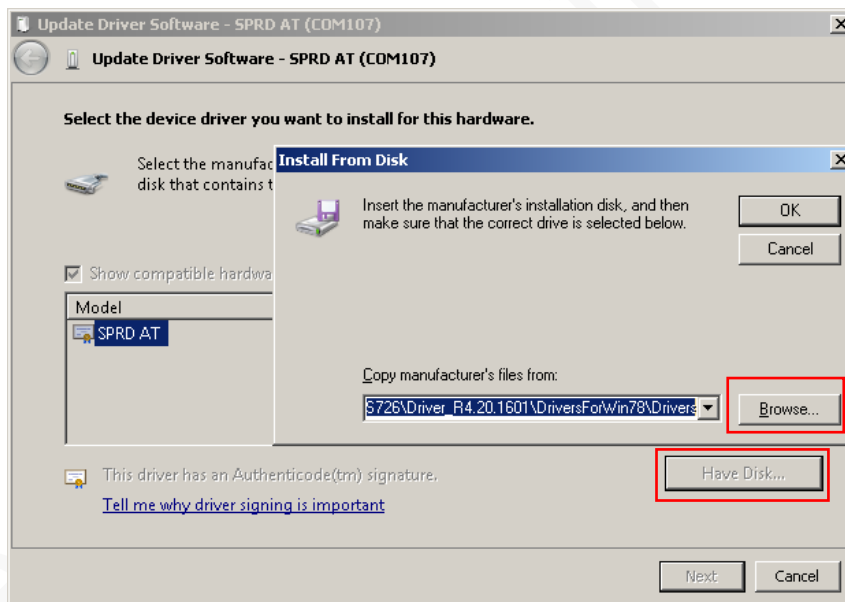
2. Click “Browse my computer for driver software”.



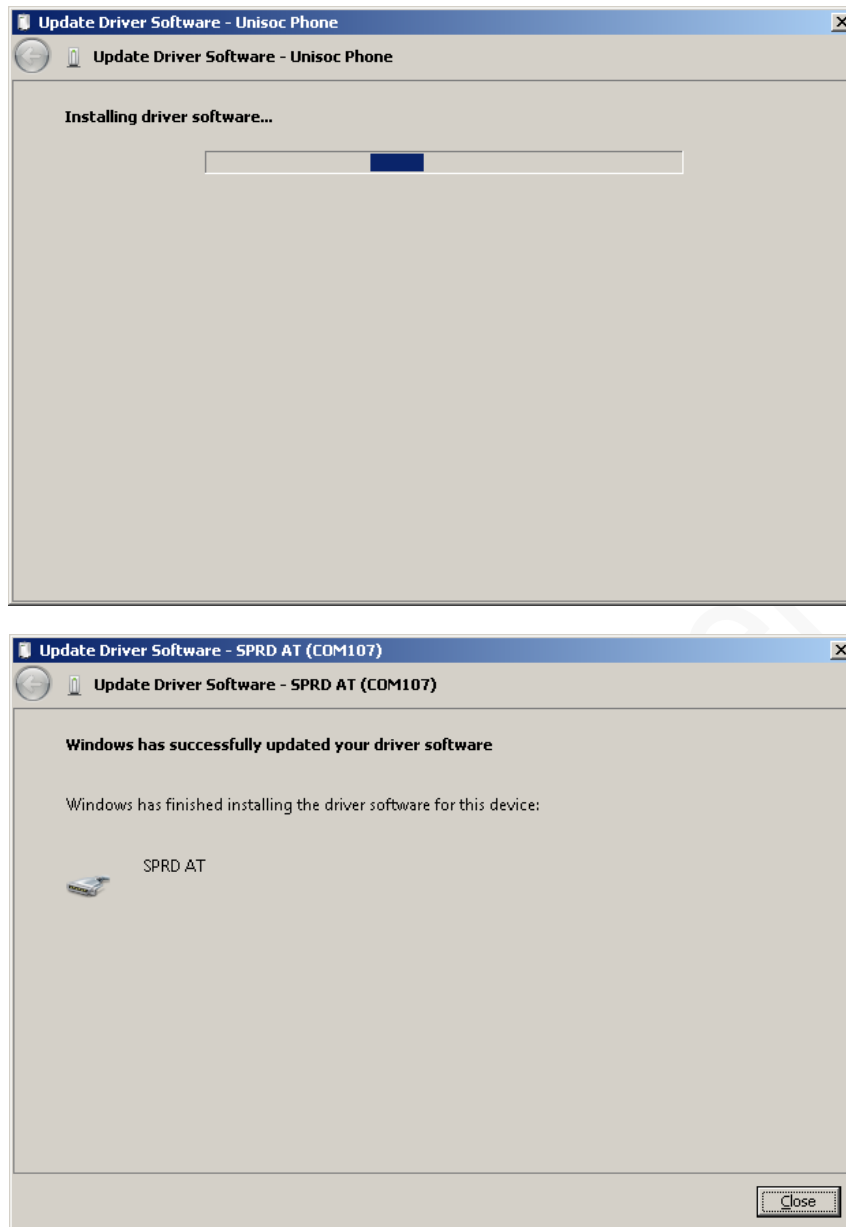
3. Click “ Let me pick from a list of device drivers on my computer ”.



4. Click “ Install from disk ”. Then click “Brows” to select the inf file which locate the driver package1 2 3DriversForWin10/Drivers for Win10 or DriverForWin78/Driver for Win7and Win8.

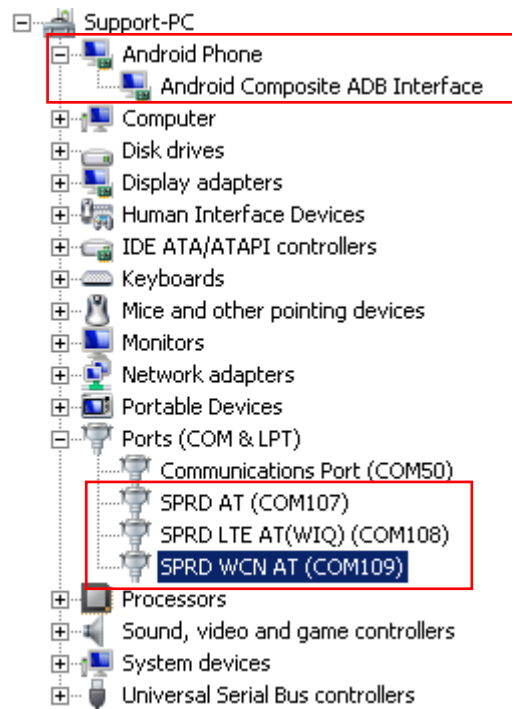


5. Click “Next”; if there is not only one item listed, please select new one and then click “Next”.



Wait until complete.

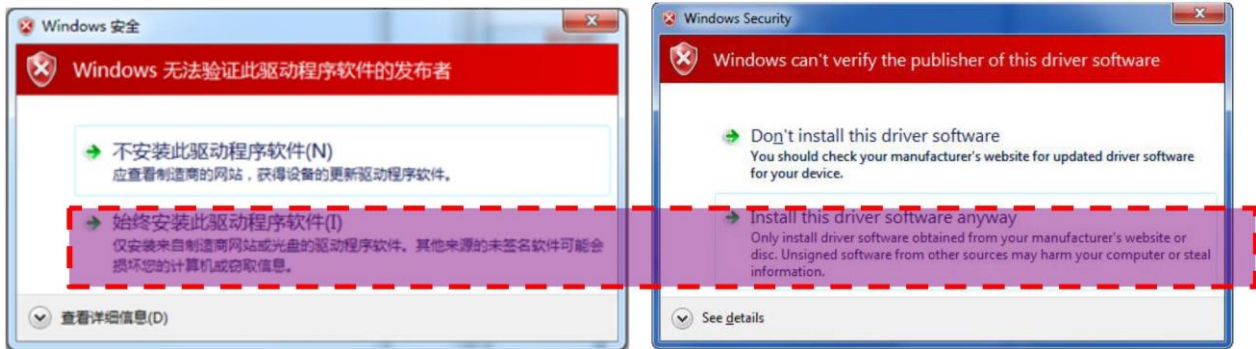
6. Repeat 1-5 for other devices.



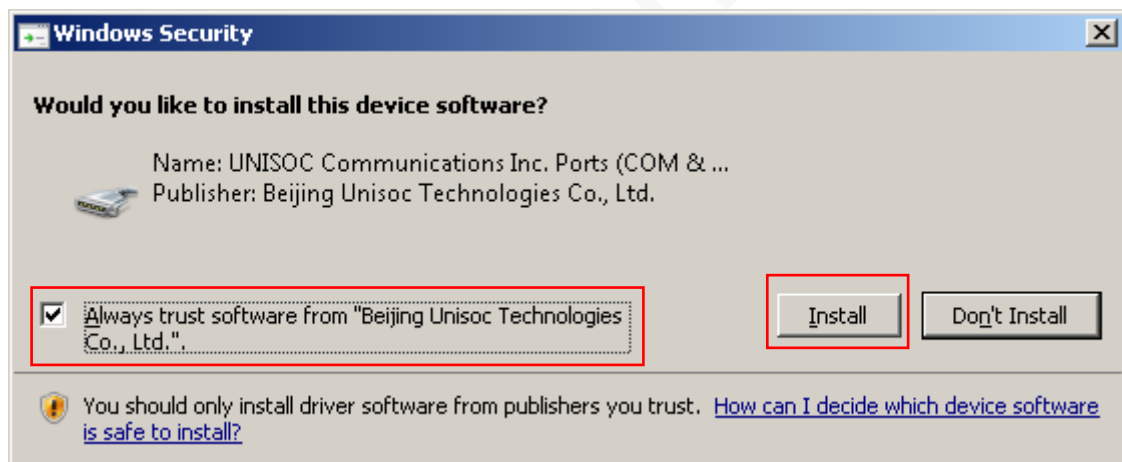
There is a simple way: In step "3", you can click "Browse" to locate to **Drivers ForWin10** folder for Win10 or **DriversForWin78** folder for Win7 and Win8, and then go to step "5".

4 FAQs

Q1: Why windows system gives the warning of Windows Security when installing?



A1: It is normal because UNISOC provides drivers with only UNISOC signature and no WHQL verification. Just ignore by clicking "Install this driver software anyway" to skip the warning and continue to install.



Q2:How to collect login information if install failed?

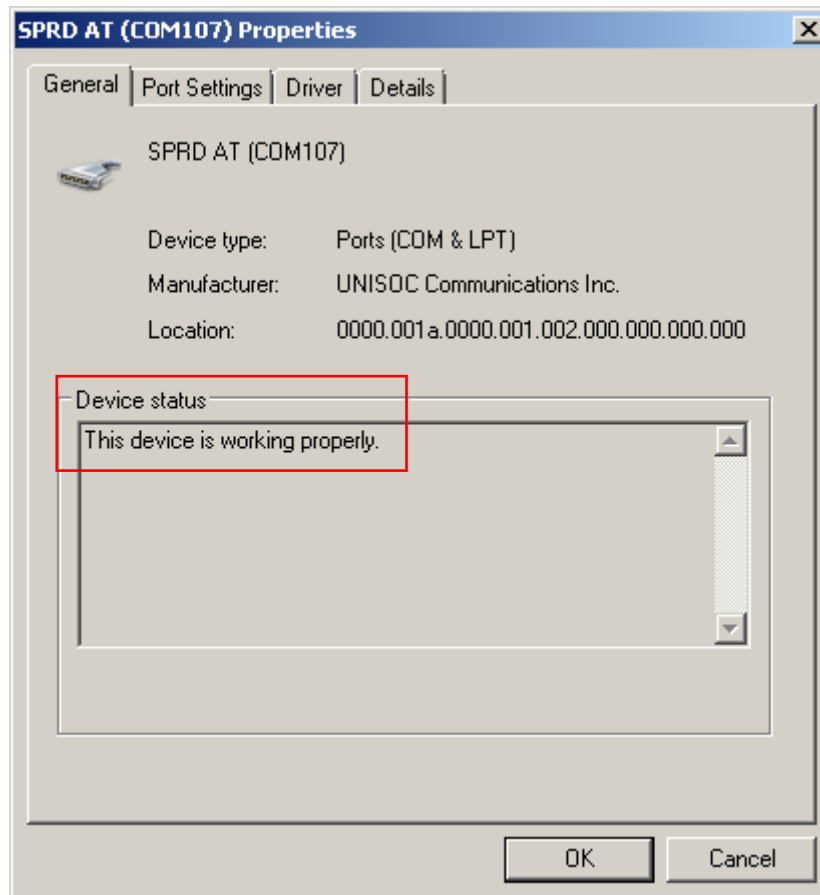
A2:

- Setup log:

Windows system will log the setup information for driver installing, and this file is stored at C:\Windows\inf\setupapi.dev.log

- Device status: get the screen shot as bellow:

Click property of device in Device Manager, and device status is displayed in the "General" tab. If device got any error, the error information will be listed in this view.



- Q3: How to check device vid and pid?
- A3:
 1. Click property of device in device manager and then click "Details" tab.
 2. Select "Hardware ID" in property combo box, then value list will show VID and PID, like below screen shot.

